



Title: Water-Serpent stories of Puget Sound Natives may refer to the A.D. 900 Seattle Earthquake

Author(s): Ruth Ludwin

Published by: Department of Earth and Space Sciences, University of Washington

Publish date: 31 October 2003

Disclaimers:

The information and all content provided herein by the Worldwide Indigenous Science Network (WISN) are provided as a service and are for general informational and educational purposes only. Original creator(s) of materials contained herein retain full copyrights. Although WISN uses reasonable efforts to ensure high quality materials, WISN does not guarantee the accuracy or completeness of content. Neither WISN nor any party involved in creating, producing, or delivering this information shall be liable for any damages whatsoever arising out of access to, use of, or inability to use the materials, or any errors or omissions in the content thereof. Users assume all responsibility for the access to and use of these materials.

Translations of any materials into other languages are provided as a convenience, and translation accuracy is not guaranteed nor implied. Users may refer to the original language/official version to ensure accuracy.



wisn.org | 573 Waive'e Street, Lahaina, Hawai'i 96761

ABSTRACT

Native Americans have resided by Puget Sound for thousands of years and must have witnessed many geological events. They described these events using their own cultural concepts, and incorporated the stories into their oral tradition.

Traditions about the A.D. 900 Seattle earthquake, handed down by storytellers for 1,100 years may survive in stories about water-serpents near the Seattle fault. A horned water serpent was said to have its home in Seattle by the shore of Lake Washington, near landslides dated to the A.D. 900 earthquake. Another story, about an earthquake- and landslide-causing horned water-serpent on the eastern shore of Puget Sound in the Fauntleroy neighborhood of West Seattle, is close to a large undated landslide visible in LIDAR images but not easily seen on the ground. Finally, on the west side of Puget Sound, a story about the deepening of Agate Pass (located on the downthrown side of the Seattle Fault) tells of an underwater battle between a water-serpent and a mythic bird, resulting in ground shaking, churning of the waters, and permanent ground level change.

Water-Serpent stories of Puget Sound Natives may refer to the A.D. 900 Seattle Earthquake

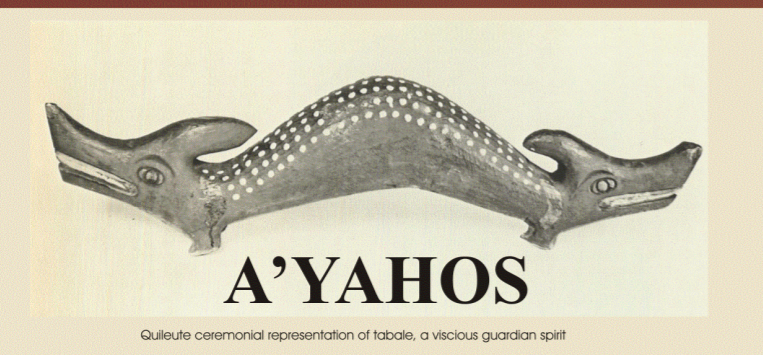
LUDWIN, R.S., Dept. of Earth and Space Sciences, Univ of Washington, Box 351310, Seattle, WA 98195-1310, rludwin@u.washington.edu

JAMES, K., Anthropologist, 13797 Silven Ave NE, Bainbridge Island, WA 98110, JONIENTZ-TRISLER, C., FEMA, Bothell, WA,

BUERGE, D., Historian, 310 NE 85th St, Seattle, WA 98115, PICKENS, J., Fauntleroy Community Association, Seattle, WA,

TROOST, K., Dept of Earth and Space Sciences, Univ of Washington, Box 351310, Seattle, WA 98195-1310, and

SKARET, M., Fauntleroy Community Association, Seattle, WA



A'yahos is a "Doctor" spirit power associated with shaking and rushes of turbid water. It comes simultaneously from land and sea, and is malevolent dangerous, and possibly fatal to encounter.

"At the spot where a'yahos came to a person the very earth was torn, land slides occurred and the trees became twisted and warped. Such spots were recognizable for years afterward" (M.W. Smith, 1949)

The a'yahos is a shape-shifter, often appearing as an enormous serpent, sometimes double headed with blazing eyes and horns, or a composite monster having the fore-quarters and head of a deer and the tail of a snake.

SEATTLE FAULT - Stories correlate with geologic features, including three large landslides, one dated to A.D. 900

AGATE PASS

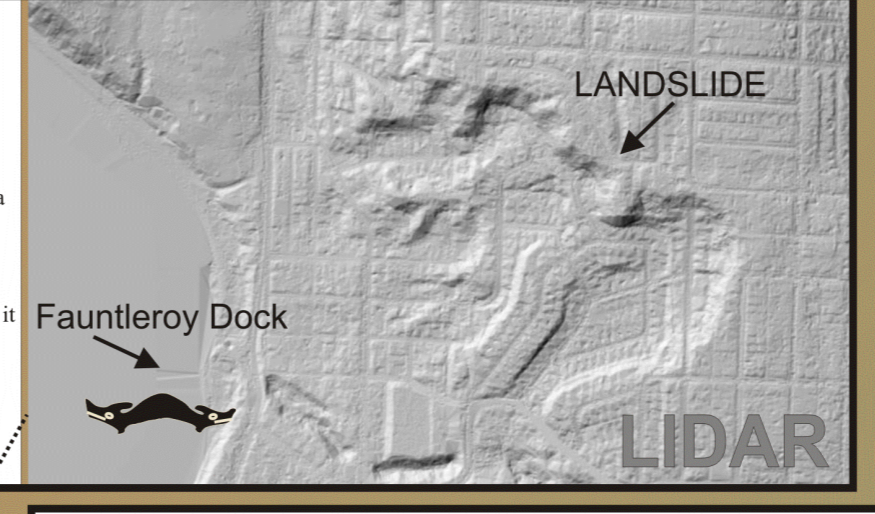
Story: SERPENT, SHAKING, THUNDER, WATER DISTURBANCE, AND WIDENING
Long ago, when this land was new, the area we know as Agate Pass was much smaller than today. ... There lived in this ... body of water a ... **Giant Serpent**. The Double Headed Eagle flew over the pass and the **Giant Serpent** came up very angry. The two began to fight, and the earth shook and the water boiled... the people began to scream and cry until it was as loud as **thunder**. Then, as if the earth was going to be swallowed by the waters, they began to boil and churn. Then, the Double Headed Eagle exploded out of the water and up into the sky with the body of the **Giant Serpent** in its claws. The Double Headed Eagle flew back into the mountain and behind him was left the wide pass ... (Jefferson, W., 2001, pp. 69-70)

Geology:
"DOWN" SIDE OF SEATTLE FAULT IN AD 900 (down motion minimal)

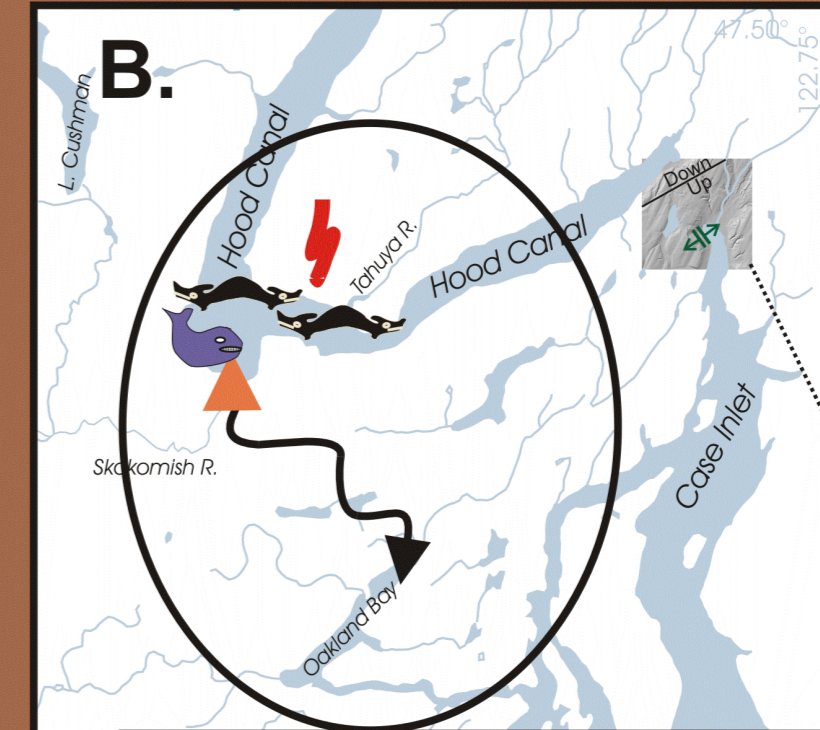
FAUNTLEROY

Stories: A'YAHOS - SEA AND LAND MONSTER
1.) "Brace Point ... was ... the abode of one of these monsters. At the base of this promontory is a... reddish boulder ... anyone looking at this boulder would be twisted into a knot. The boulder ... was believed to change its form" (Watman, T.T., 2001, p. 67).
2.) Neighborhood residents identify the position of the boulder as near the Fauntleroy Ferry Dock, rather than at Brace Point (see authors Pickens and Skaret).
3.) "Two brothers from Staga'be went out along beach at Alki Point for power. One got it from sea and one from woods. They got it so strong that when ... they looked at stone it exploded" (Notes of Marian Wesley Smith).

Geology:
LIDAR - PREHISTORIC LANDSLIDE - UNDATED



HOOD CANAL & CASE INLET testable hypotheses

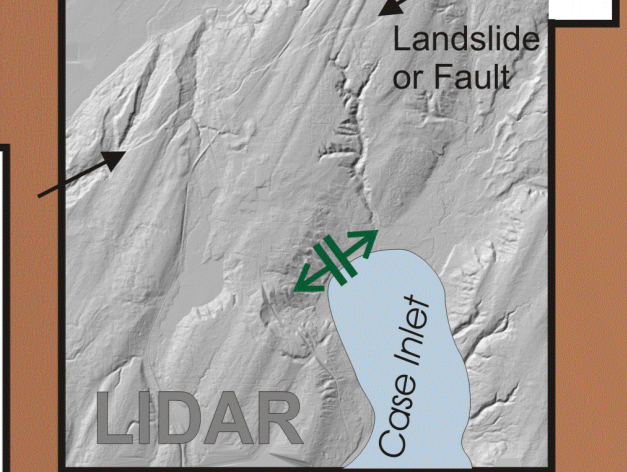


CASE INLET

Story: Land opened by force
PLACE NAME: "... the land here was opened by force, the water entering and making a bay" (T.T. Waterman, 2001)

Geology:
LIDAR: Lineation, recently trenched by Alan Nelson, appears to be either a landslide or a fault scarp.
PALEOSEISMOLOGY: Theler Wetland, to the north, shows evidence of possible uplift - a sand sheet overlying marine deposits, with fresh-water plants above the sand sheet.

Correlation: Imperfect



BIG BEND OF HOOD CANAL

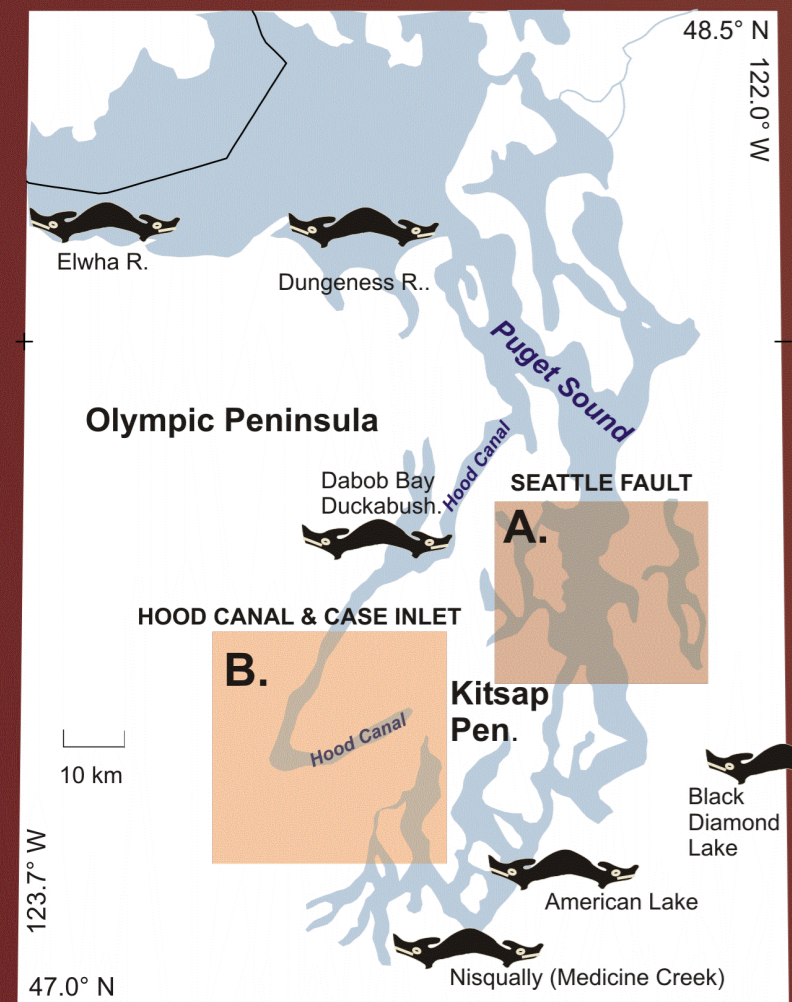
Stories: SHAKING AND BREAKING
A'YAHOS STORIES (2) - "that rock moved and shook and then it split in two ... A'yahos was in that rock and he had opened his door for that young man." (Elmendorf, 1993, pp. 200-204)
A ROCK CALLED THUNDER - (Elmendorf & Kroeber, 1992, 435, p. 38)
A WHALE AND SHAKING IMAGERY - ... they were at a place now called Union City. Whale called as he drew near, "All girls and women under forty do not look this way." While Whale was pulling to shore one young woman who wanted to see looked and as she did so Whale jumped back. This knocked the two men off and they lost their shells. (Palmer, K., 1925)
UPLIFT AT SKOKOMISH MOUTH "... he cursed the ground, and ... the water went away and a great mass of ground rose up, half sea half land, and so it is to this day" (Cassidy, 1999)
REVERSAL OF FLOW OF SKOKOMISH RIVER - "a woman in myth times who did not wish the Skokomish River to flow into Oakland Bay ... Put her daughter up the river, and the current carried the daughter about 3 miles toward Shelton, but there she stuck and dammed the stream and made it go where it now runs. The daughter is now a rock in the former channel" (Elmendorf & Kroeber, 1992, 428, p. 37)

Geology:
NO LIDAR AVAILABLE
Testable Hypotheses based on stories:
Sudden Uplift
Shaking
Change in Skokomish channel

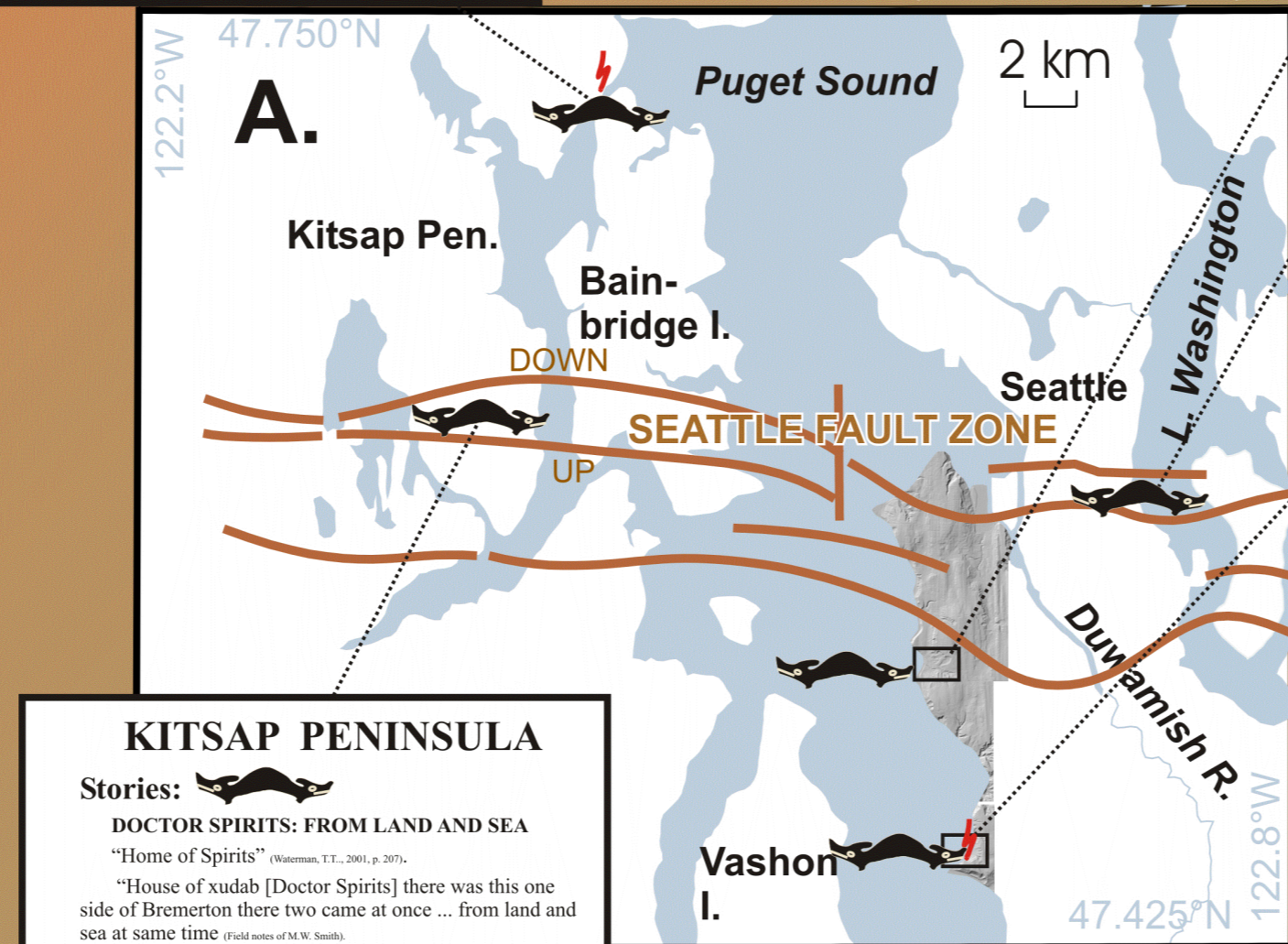
REFERENCES

Costello, J.A., The Sitwah: Their Life Legends and Tales (1896)
Curtis, E.S., Northwestern University Library, Edward S. Curtis's 'The North American Indian', the Photographic Images, 2001. <http://memory.loc.gov/ammem/awar98/renhtml/curtimage.html>
Elmendorf, W.W., Twana Narratives [Information collected in the 1930s], University of Washington Press, (1993)
Elmendorf, W.W. and A.L. Kroeber, The structure of Twana Culture, with comparative notes on Yurok Culture [Information collected in the 1930s], WSU Press, Pullman, WA (1992)
Jefferson, W., The World of Chief Seattle, Native Voices Book Publishing Co., Summertown, Tennessee (2001)
Haeberlin, H. H. and E. Gunther, The Indians of Puget Sound, University of Washington Press, (1930)
Jenness, Diamond, The Faith of a Coast Salish Indian, British Columbia Provincial Museum [Information collected in the 1930s], Anthropology in British Columbia, Memoir 3 (1955)
Karlin, R.E., and S.E.B. Abella, Paleoseismicity in the Puget Sound Region recorded in Sediments from Lake Washington, U.S.A., Science, V. 258, pp. 1617-1619 (1992).
McDonald, L., Big Landslide in 1898 Chased Pioneer Sawmill, Seattle Times, Sunday Jan. 22, 1956
Möhling, Virginia Gill, 1957, Twana Spirit Power Songs, U.W. Master's Thesis, Dept. of Anthropology, (1957)
Palmer, K., Honne, The Spirit of the Chehalis, Privately printed by the author (1925)
Powell, Jay, and Vickie Jensen, QUILUTE: An Introduction to the Indians of La Push Prepared for the Quilute Tribe, University of Washington Press, Seattle (1976)
Puget Sound LIDAR Consortium, <http://duff.geology.washington.edu/data/raster/lidar/>
Smith, Marian W., The Puyallup-Nisqually, Columbia University Press, New York, (1940)
Smith, Marian W., interview with Seattle's grandson Sam Wilson, b. 1861 [Information collected in the 1930s], handwritten notes, originals held by Royal Anthropological Institute, 50 Fitzroy Street, London, W1P 5HS U.K. Viewed on Microfilm at B.C. Provincial Archives [Information collected in the 1930s] (RBCM), microfilm A1738, Reel 3 Box 5, Reference MS 268-5.4 Nos. 1-18 [Information collected in the 1930s]
Waterman, T.T., Puget Sound Geography, edited and with additional material from Vi Hilbert, Jay Miller, and Zalmai Zahir, Lushootseed Press, available from Zahir Consulting, (253-709-3798). [From a manuscript written in 1920 - Manuscript No. 1864 in National Anthropological Archives, Smithsonian Institution], (2001).

Puget Sound Index Map and a'yahos sites (some correlate with known earthquake locales)



Salish mask linked to shaking effects, whirlwinds, and thunder. Two-headed snake



KITSAP PENINSULA

Stories: DOCTOR SPIRITS: FROM LAND AND SEA
"Home of Spirits" (Watman, T.T., 2001, p. 207).
"House of xudab [Doctor Spirits] there was this one side of Bremerton there came at once ... from land and sea at same time (Field notes of M.W. Smith).

Geology:
BETWEEN INFERRED TRACES OF SEATTLE FAULT
LIDAR: No features noted.

LAKE WASHINGTON

Stories: A'YAHOS MONSTER'S HOME
"On the lake shore opposite the north end of Mercer Island ... an enormous supernatural monster ... lived" (Watman, T.T., 2001, p. 102)

Geology:
PREHISTORIC LANDSLIDES DATED TO A.D. 900 (Karlin and Abella, 1992)
HISTORIC LANDSLIDE IN 1898 (McDonald, 1956)

THREE-TREE POINT

Stories: A'YAHOS MONSTER'S HOME
1.) "a great snake lived inside, shoving the sand down when people disturbed him" (Watman, T.T., 2001, p. 39).
2.) The A'yahos was located north of Three-Tree Point (James Rasmussen, Duwamish Tribe, personal communication, Oct. 16, 2003).
THUNDER: Native name of Lake Burien (Watman, T.T., 2001, p. 39).

Geology:
LIDAR - LARGE UNDATED, UNMAPPED, LANDSLIDE-LIKE FEATURE